

Oakshott - Designer Collection

'SPOT ON' Appliqué Scatter Cushions

designed by

Lesley Brankin

These fun 'mix and match' cushions are both quick to make and a great way to showcase a collection of fabrics such as those in the delectable Oakshott Seasons range. Suitable for bonded or turned appliqué techniques combined with simple piecing.



Sizes

Instructions provided for 12" x 12", 12" x 16" or 16" x 16" cushions, though can easily be adapted to other sizes as well.

Materials Required (per cushion)

a selection of fat eighths* (Oakshott Seasons)

- 1 fat eighth neutral Longshott (LONG01)
- 1 fat eighth neutral Colourshott (COTT01 or undyed)
- wadding - 13" x 13", 13" x 17" or 17" x 17"
- backing for cushion top (neutral Colourshott or calico) – 13" x 13", 13" x 17" or 17" x 17"
- backing for cushion cover (neutral Longshott or Colourshott) 13" x 18" or 13" x 22" or 17" x 22"
- cushion pad

* one selection is enough to make several cushions

General Notions

- neutral sewing threads
- small piece lightweight card (e.g. cereal packet)
- 3 buttons (optional), decorative threads (optional)
- *for bonded appliqué* - firm paper or freezer paper
- *for turned appliqué* - fusible web (e.g. Bondaweb)

A ¼" seam allowance is used throughout.

Circle Blocks - Preparation

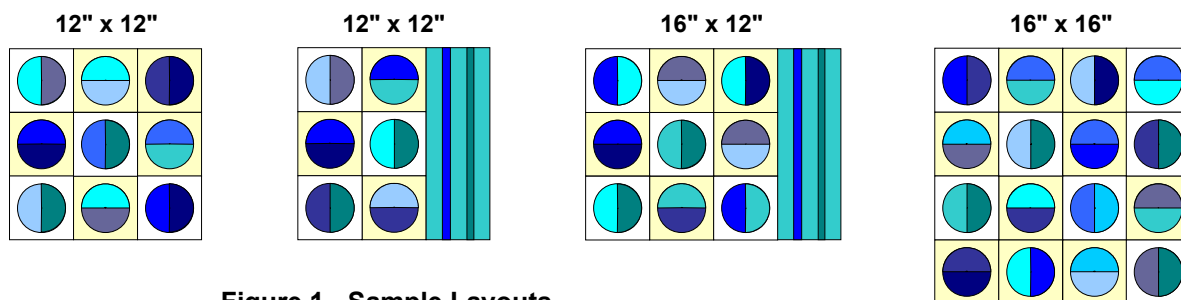
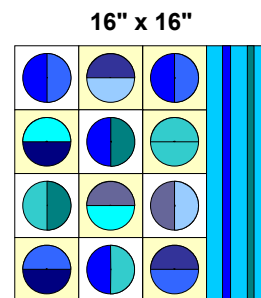


Figure 1 - Sample Layouts

1. Decide on the number of 4" x 4" circle blocks your cushion will feature,

Figure 1.

2. Cut this number of 4"x 4½" rectangles from Seasons fabrics and then cut each in half to give 2, 4 x 2¼" rectangles.
3. Sew together (lengthwise) random coloured pairs of Seasons rectangles to create bi-coloured squares.
4. Press all seams open.
5. From a selection of neutral coloured Colourshott and Longshott fabrics, cut one 5" x 5" square for each circle.



Circle Blocks - Bonded Appliqué Option

Before you start, cut a 3" circle from card and draw in a diameter line as a drawing template. Only one is needed per project.

For each block required:

1. Using your template, draw a circle onto fusible web. Mark in diameter line.
2. Roughly cut around circle.
3. With wrong side of a pieced square facing upwards, centre the web circle matching the diameter line to the seam line, **Figure 2.**
4. Press and cut out accurately.
5. Peel off backing and with right sides facing, position circle in centre of a neutral square. Press.
6. Optionally stitch around edge of circle to secure (e.g. with zig-zag or satin stitch).

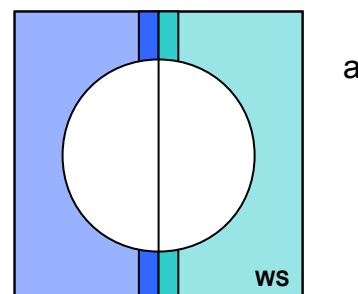


Figure 2
Webbing or Template Placement

Circle Blocks - Turned Appliqué Option

Cut a 3¾" circle (cutting template) from card and draw in a diameter line. Only one is needed per project.

For each block required cut a 3" circle (appliqué template) from paper, mark in a diameter line.

For each block required:

1. With wrong side of a pieced square facing upwards, match the diameter line to the seam line; centre the cutting template, **Figure 2.**
2. Pin and/or draw round circle template. Cut out.

3. Using running stitch and a strong thread (e.g. neutral quilting thread) stitch around the edge of the circle (approx. $\frac{1}{8}$ " from the edge).
4. Place an appliqué template in the centre and gently draw up the threads. Tie off tightly.
5. With right side facing press circle flat. Do **not** remove the draw thread.
6. Position circle in centre of a neutral square, right sides facing. Pin.
7. Stitch circle to square using preferred appliqué method.
8. Using a sharp pair of scissors and working from the wrong side, trim away excess backing fabric to a neat $\frac{1}{4}$ " allowance.
9. Carefully prise out appliqué paper.

Making the Cushion Top

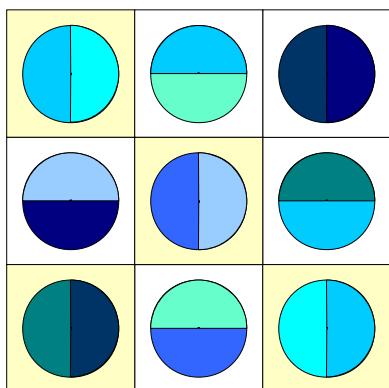


Figure 3
Block Layout (12" x 12")

1. Ensuring circles are centred; trim each circle block to an accurate $4\frac{1}{2}$ " x $4\frac{1}{2}$ " square.
2. Layout blocks as shown in **Figure 3**.
3. Stitch blocks together into rows.
4. Stitch rows together.

Optional Striped Panel - makes a 4" wide stripe

Replacing one column of circle blocks with a panel of Seasons stripes gives an alternative flavour of design.

These instructions assume you are making a 4" wide panel:

1. Measure the 'height' of your cushion and add 1".
2. Cut 3, $1\frac{1}{2}$ " wide strips of this length from Seasons fabric (main stripe fabric).
3. From each of two contrasting Seasons fabrics cut a 1" wide strip of the same length.
4. Layout strips to make a sandwich. Sew together lengthways.
5. Trim the ends so that the 'height' of finished panel is the size of your cushion plus $\frac{1}{2}$ ".
6. Attach finished panel to your circle panel, **Figure 4**.

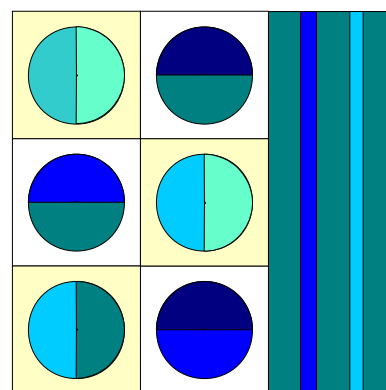


Figure 4
Block Layout (12" x 12")

Additional Options

The basic instructions can easily be adapted to any size of cushion whose dimensions are a multiple of 4". Alternatively you could add a sashing, increase the width of the stripe etc. to customise the design to fit your own cushions.

Quilting

1. Sandwich the backing, wadding and cushion top.
2. Baste and quilt as desired.

I first quilted 'in the ditch' along the major seam lines and around the appliquéd circles. Then, using complimentary coloured embroidery threads and basic machine stitches, I added a few lines of stitching to add visual interest.

Making Up

Note: Instructions are given for a buttoned, envelope style cushion cover. Alternatively a zip could be included and/or piping added depending on the finish required.

1. Cut 2 pieces of neutral fabric as follows:
 - 12" square cushion: one piece 12½" x 6¼" and one 12½" x 11¼"
 - 16" square cushion: one piece 16½" x 8¼" and one 16½" x 13¼"
 - 12" x 16" rectangular cushion: one piece 12½" x 8¼" and one 12½" x 13¼"
2. Make a neat 1" deep hem along one side of each piece (the side equivalent to the height of your cushion).
3. Optionally make 3 buttonholes on the larger piece, evenly spacing these along the length of the hem.

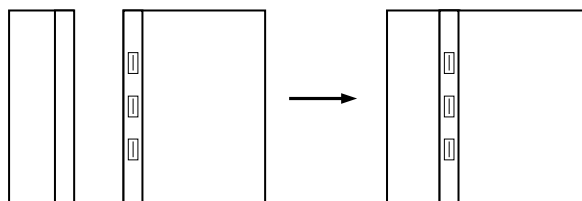


Figure 5
Cushion
Back

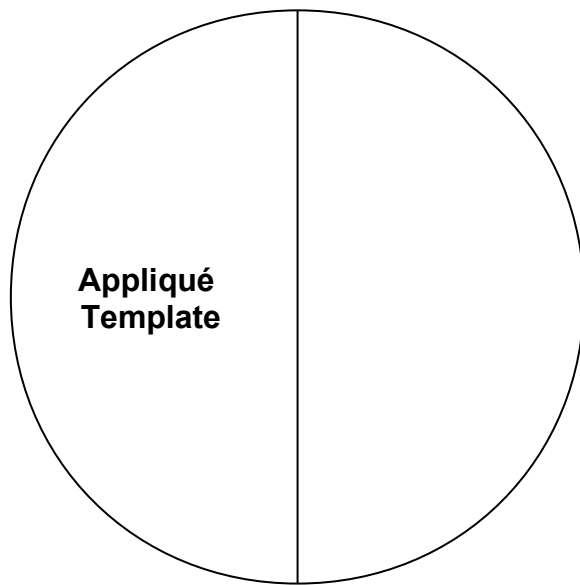
4. Place cushion front on table, right side facing upwards.
5. Overlap the two pieces of backing fabric, with hemmed edges towards centre and right sides facing downwards, on top of cushion front. Ensure that all raw edges match.
6. Sew front and back cushion pieces together (sew round all the edges, reinforcing the section where the hems overlap).
7. Trim excess fabric from corners.
8. Turn cushion right sides out. Press gently.
9. Sew on buttons to match buttonholes.
10. Insert cushion pad and admire!

Designed by
Lesley Brankin
for

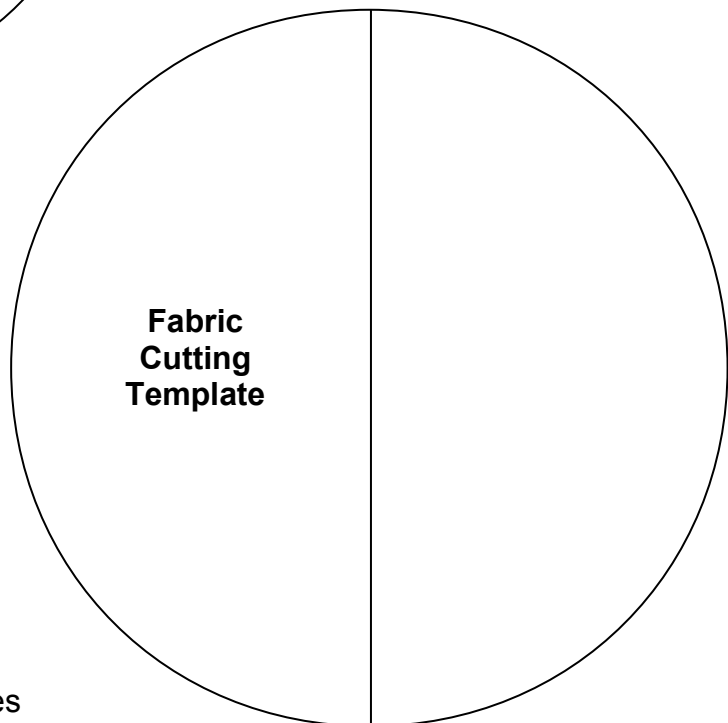
Oakshott and Company Ltd.
19 Bamel Way
Gloucester Business Park
Brockworth
Gloucestershire
GL3 4BH

Tel: 01452 371571, Fax: 01452 371573
Email: sales@oakshottfabrics.com

www.oakshottfabrics.com



**'SPOT ON'
Templates**



All text, diagrams and templates
copyright Lesley Brankin, 2008

Disclaimer –

Every care has been taken to ensure the accuracy of these instructions, but no guarantee can be given with regard to any finished article(s) as materials and procedures used to make the design will vary.